

# Natural changes of population 1961 – 2022

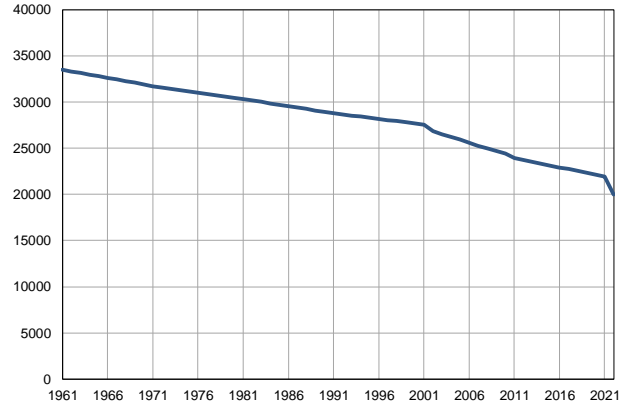
Profile  
July 2023

## Novi Bečej

	1961	2022
Population size	33507	19976
Livebirths, Number	600	214
Deaths, Number	315	348
Natural increase, Number	285	-134
Infants deaths, Number	38	0
Livebirths, per 1,000 population	18	11
Deaths, per 1,000 population	9	17
Natural increase, per 1,000 population	9	-7
Infants deaths, per 1,000 livebirths	63	0

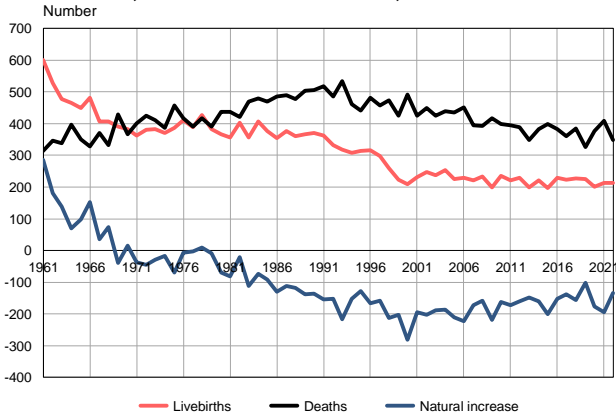
Source: Vital Statistics, SORS

Population size, 1961–2022



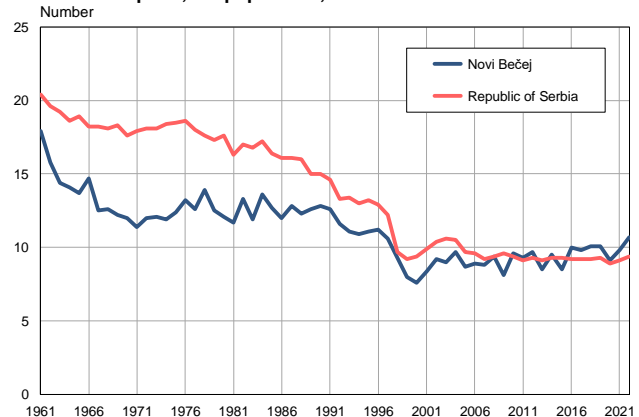
Source: Vital Statistics, SORS

Livebirths, deaths and natural increase, 1961–2022



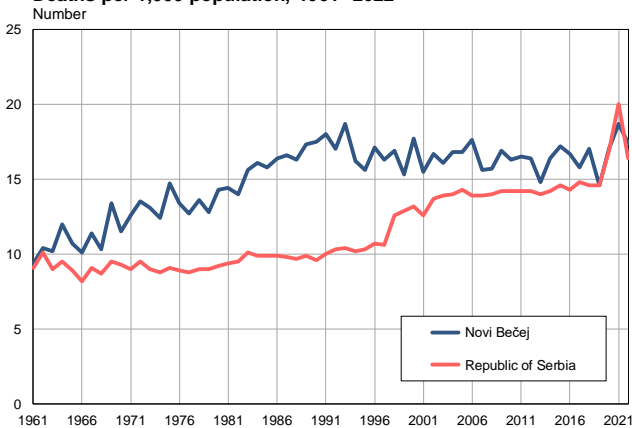
Source: Vital Statistics, SORS

Livebirths per 1,000 population, 1961–2022



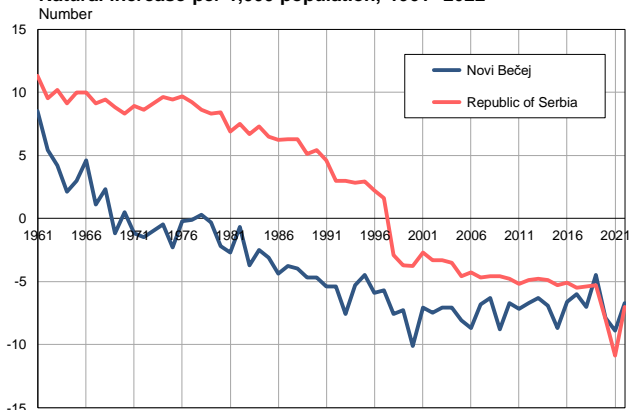
Source: Vital Statistics, SORS

Deaths per 1,000 population, 1961–2022



Source: Vital Statistics, SORS

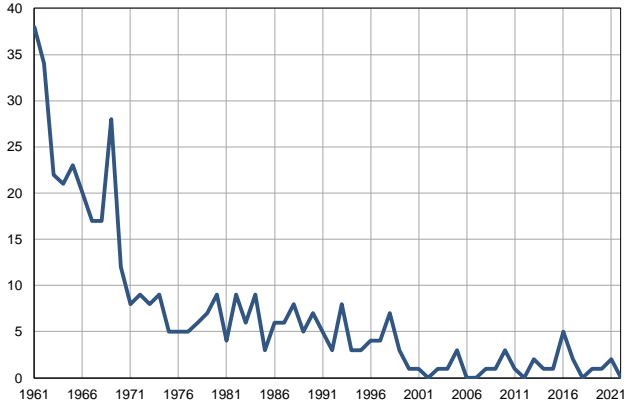
Natural increase per 1,000 population, 1961–2022



Source: Vital Statistics, SORS

**Infants deaths, 1961–2022**

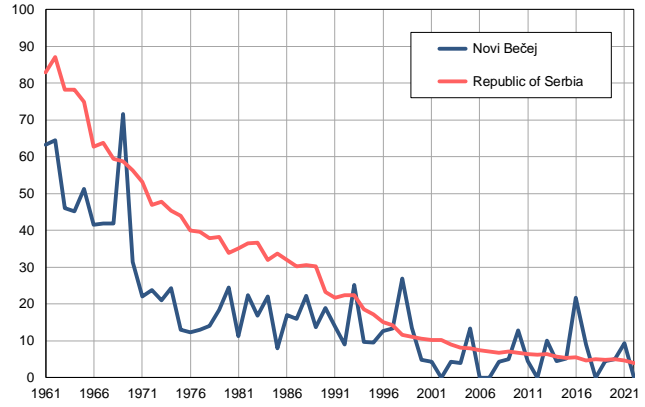
Number



Source: Vital Statistics, SORS

**Infants deaths per 1,000 livebirths, 1961–2022**

Number



Source: Vital Statistics, SORS

**Table. Natural changes of population, Novi Bečej**

Year	Number of population	Livebirths	Deaths	Natural increase	Infants deaths	per 1000 population			Infant deaths per 1000 livebirths
						Livebirths	Deaths	Natural increase	
1961	33507	600	315	285	38	17.9	9.4	8.5	63.3
1962	33329	527	346	181	34	15.8	10.4	5.4	64.5
1963	33151	477	338	139	22	14.4	10.2	4.2	46.1
1964	32974	466	397	69	21	14.1	12.0	2.1	45.1
1965	32796	449	351	98	23	13.7	10.7	3.0	51.2
1966	32618	481	328	153	20	14.7	10.1	4.6	41.6
1967	32440	406	370	36	17	12.5	11.4	1.1	41.9
1968	32262	407	333	74	17	12.6	10.3	2.3	41.8
1969	32085	391	430	-39	28	12.2	13.4	-1.2	71.6
1970	31907	382	367	15	12	12.0	11.5	0.5	31.4
1971	31729	363	401	-38	8	11.4	12.6	-1.2	22.0
1972	31587	380	426	-46	9	12.0	13.5	-1.5	23.7
1973	31446	382	411	-29	8	12.1	13.1	-1.0	20.9
1974	31304	371	387	-16	9	11.9	12.4	-0.5	24.3
1975	31162	387	457	-70	5	12.4	14.7	-2.3	12.9
1976	31020	410	416	-6	5	13.2	13.4	-0.2	12.2
1977	30879	388	391	-3	5	12.6	12.7	-0.1	12.9
1978	30737	427	417	10	6	13.9	13.6	0.3	14.1
1979	30595	382	391	-9	7	12.5	12.8	-0.3	18.3
1980	30454	367	437	-70	9	12.1	14.3	-2.2	24.5
1981	30312	356	437	-81	4	11.7	14.4	-2.7	11.2
1982	30160	402	422	-20	9	13.3	14.0	-0.7	22.4
1983	30007	357	469	-112	6	11.9	15.6	-3.7	16.8
1984	29855	407	480	-73	9	13.6	16.1	-2.5	22.1
1985	29702	377	469	-92	3	12.7	15.8	-3.1	8.0
1986	29550	355	485	-130	6	12.0	16.4	-4.4	16.9
1987	29398	377	489	-112	6	12.8	16.6	-3.8	15.9
1988	29245	360	477	-117	8	12.3	16.3	-4.0	22.2
1989	29093	367	504	-137	5	12.6	17.3	-4.7	13.6
1990	28940	371	506	-135	7	12.8	17.5	-4.7	18.9
1991	28788	363	517	-154	5	12.6	18.0	-5.4	13.8
1992	28666	333	486	-153	3	11.6	17.0	-5.4	9.0
1993	28545	318	534	-216	8	11.1	18.7	-7.6	25.2
1994	28423	309	461	-152	3	10.9	16.2	-5.3	9.7
1995	28301	315	442	-127	3	11.1	15.6	-4.5	9.5
1996	28180	316	482	-166	4	11.2	17.1	-5.9	12.7
1997	28058	298	457	-159	4	10.6	16.3	-5.7	13.4
1998	27937	260	473	-213	7	9.3	16.9	-7.6	26.9
1999	27815	223	425	-202	3	8.0	15.3	-7.3	13.5
2000	27693	210	491	-281	1	7.6	17.7	-10.1	4.8
2001	27572	231	426	-195	1	8.4	15.5	-7.1	4.3
2002	26855	247	449	-202	0	9.2	16.7	-7.5	0.0
2003	26524	238	426	-188	1	9.0	16.1	-7.1	4.2
2004	26211	254	440	-186	1	9.7	16.8	-7.1	3.9
2005	25918	225	435	-210	3	8.7	16.8	-8.1	13.3

**Table. Natural changes of population, Novi Bečej**

Year	Number of population	Livebirths	Deaths	Natural increase	Infants deaths	per 1000 population			Infant deaths per 1000 livebirths
						Livebirths	Deaths	Natural increase	
2006	25601	229	451	-222	0	8.9	17.6	-8.7	0.0
2007	25271	222	395	-173	0	8.8	15.6	-6.8	0.0
2008	24970	234	393	-159	1	9.4	15.7	-6.3	4.3
2009	24690	199	417	-218	1	8.1	16.9	-8.8	5.0
2010	24422	235	398	-163	3	9.6	16.3	-6.7	12.8
2011	23940	222	394	-172	1	9.3	16.5	-7.2	4.5
2012	23712	229	389	-160	0	9.7	16.4	-6.7	0.0
2013	23512	200	348	-148	2	8.5	14.8	-6.3	10.0
2014	23320	221	382	-161	1	9.5	16.4	-6.9	4.5
2015	23116	197	398	-201	1	8.5	17.2	-8.7	5.1
2016	22932	230	382	-152	5	10.0	16.7	-6.6	21.7
2017	22762	223	360	-137	2	9.8	15.8	-6.0	9.0
2018	22563	227	384	-157	0	10.1	17.0	-7.0	0.0
2019	22359	226	327	-101	1	10.1	14.6	-4.5	4.4
2020	22139	201	377	-176	1	9.1	17.0	-7.9	5.0
2021	21896	214	409	-195	2	9.8	18.7	-8.9	9.3
2022	19976	214	348	-134	0	10.7	17.4	-6.7	0.0

Source: Vital Statistics, SORS

## Definitions

### Population size

Number of population in the respective year. The data on the number of population in 1961, 1971, 1981 and 1991 are census data, while for the inter-census years the number of population was calculated as an average inter-census difference. From 2002 are given the population estimates that were calculated according to the census of population results and the annual statistics of natural mechanical population movements.

### Livebirths

Absolute number of live births in the course of a year. Live born child means a child giving vital signs after birth (breathing, i.e. heartbeat), even for the shortest time, regardless the mother's pregnancy duration.

### Deaths

Absolute number of deaths in the course of a year. Deceased is a person that whenever after having been born live, shows permanently stopped vital signs.

### Natural increase

Natural population increase is the number of live births minus the number of deaths.

### Infants deaths

Absolute number of infants deaths in the course of a year. Deceased infant is a child that after having been born live and before aged one year, shows permanently stopped vital signs.

### Livebirths, per 1 000 population

Livebirths rate is the ratio of the number of live births and the population size in the respective year. The number of live births is divided by the population size and then multiplied by 1000.

### Deaths, per 1 000 population

General mortality rate represents the ratio between the number of deaths and the population size in the respective year. The number of deaths is divided by population size and then multiplied by 1000.

### Natural increase, per 1 000 population

Natural population increase rate is the difference between the number of live births and the number of deaths, in relation to the population size in the respective year.

Natural population increase rate = (number of live births - number of deaths) / population size \* 1000

### Infants deaths, per 1 000 livebirths

Infant mortality rate is the ratio of deceased children under 1 year of age and live births in the respective year. The mortality rate is expressed per 1000 live births.

Infant mortality rate = (number of deceased children under 1 year of age / number of live births) \* 1000

## Additional info:



Download all database data in Excel format:

[Data](#)



DevInfo profiles:

[devinfo.stat.gov.rs/SerbiaProfileLauncher/?lang=en](http://devinfo.stat.gov.rs/SerbiaProfileLauncher/?lang=en)



DevInfo online database:

[devinfo.stat.gov.rs/vitalna](http://devinfo.stat.gov.rs/vitalna)



For additional information or questions please contact:

[devinfo@stat.gov.rs](mailto:devinfo@stat.gov.rs)